



THE SUPER-COMPACT SOLUTION

REAL 360 DEGREE VISIBILITY

EXTRA LARGE CAB

EXCLUSIVE HYDROSTATIC TRANSMISSION,
WITHOUT GEARBOX OR DIFFERENTIALS

"3 IN 1" JOYSTICK CONTROL

EXCEPTIONALLY LOW CENTRE OF GRAVITY

420 mm GROUND CLEARANCE

HIGH POWER TO WEIGHT RATIO

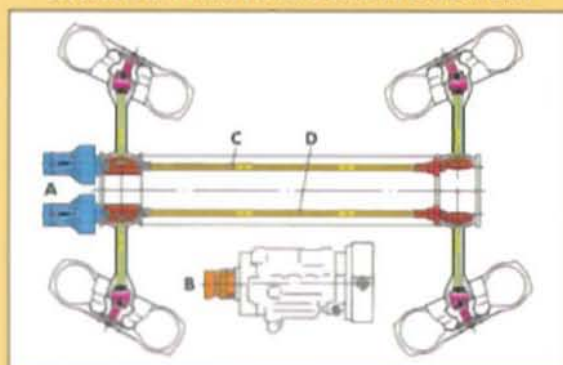
CHOICE OF ROUGH TERRAIN TYRES

OVERALL HEIGHT
ONLY 1,95 m

OVERALL WIDTH
ONLY 1,8 m



UNIQUE TRANSMISSION SYSTEM



INTERNATIONAL PATENT - GOLD MEDAL AT THE VERONA FAIR

This unique MERLO transmission layout uses two variable hydraulic piston motors, connected in parallel to a single variable displacement hydraulic pump.

Each motor independently powers a drive shaft connected to front and rear wheels on one side of the machine.

A differential effect is automatically achieved by a parallel connection of the hydraulic circuit.

This ensures high traction to all four wheels in even the most difficult ground conditions.

- A Variable displacement piston motors (one for each side)
- B Variable displacement hydraulic piston pump with automatic management system
- C Left transmission shaft
- D Right transmission shaft

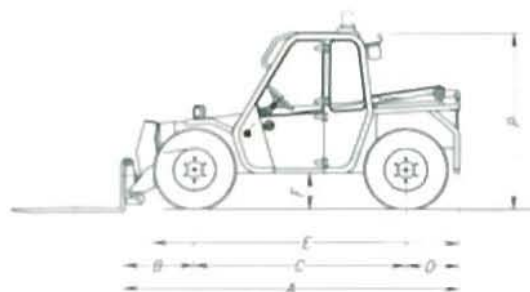


THE PROTECTION OF A
"RING OF STEEL !"

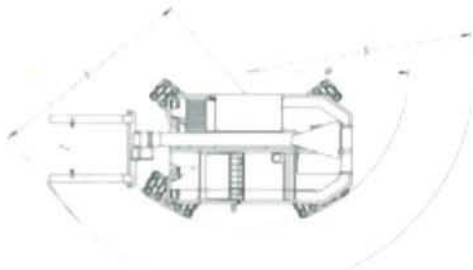
PANORAMIC P 23.6 EV-SC

A	mm	3545
B	mm	715
C	mm	2260
D	mm	570
E	mm	3250
F	mm	420
H	mm	1800
M	mm	900
P	mm	1950
R	mm	2900
S	mm	3650
T	mm	3100
Z	mm	800

DIMENSIONS



OUTSTANDING MANOEUVRABILITY



WEIGHTS

Machine weight (forks only) kg 4350

PERFORMANCE

Max. lift capacity kg 2300
 Max. lift height mm 5800
 Max. reach mm 3100
 Max. height at full capacity mm 4000
 Max. reach at full capacity mm 1100
 Max. capacity at full height kg 1500
 Max. capacity at full reach kg 800
 Tear-out force with 800 lt bucket (SAE J732/80) kg 3305
 Drawbar pull kg 2250
 Carriage rotation deg 152

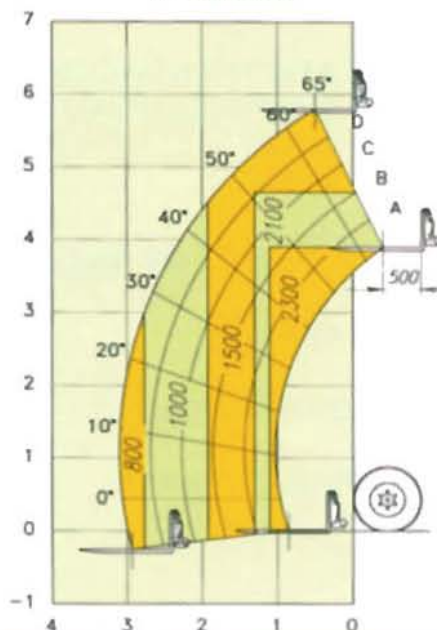
OPERATING TIMES

Boom lift sec 7
 Boom lower sec 5
 Boom extend sec 6
 Boom retract sec 4
 Full carriage tilt sec 3
 800 lt bucket dump sec 1

TRAVEL SPEED

1st gear kph 11
 2nd gear kph 24

P 23.6 EV-SC



OPERATOR'S CAB

Structure complies with EEC directives 86/295 (ROPS) and 86/296 (FOPS).

The cab is mounted on rubber antivibration blocks and fitted with noise dampening panels.

Front and rear screens are fitted with wipers and can be opened for additional ventilation.

Boom and carriage are operated by "3 in 1" electromechanical joystick.

Instrumentation includes: Tachometer/Revolution counter, hour meter, fuse box, check-control panel showing blocked engine air filter, hydrostatic oil level and temperature, engine oil pressure, coolant temperature, parking brake warning light. Centralized pressure test gauge. Also as standard is a cab heater/demister/pressurisation system and a courtesy light.

SAFETY SYSTEMS

Safety lock valves are incorporated in all hydraulic cylinders.

A reversing bleeper is fitted.

Remote engine hood lock.

BOOM

A two section boom made from high yield steel and telescoping on anti friction externally adjusted pads.

The extension cylinder is protected by mounting inside the boom.

CARRIAGE

The "TAC-LOCK" fork carriage (enabling attachment locking from within the cab), has two

hydraulic service lines providing a double acting service.

PALLET FORKS

1000 mm long, section 130 x 45 mm.

Centre to centre fork distances, manually adjustable, from 250 to 1050 mm.

STEERING

Hydraulically, three modes:

- All wheel steer
- Front wheel only steer
- Crab steer

ENGINE

4 cylinder Diesel engine with direct injection and water cooling 51 kW (68 Hp) at 3200 rpm (DIN 70020).

TRANSMISSION

Closed circuit hydrostatic transmission with stepless speed adjustment.

Two variable displacement piston motors giving maximum travel speeds of 11 kph (1st gear) and 24 kph (2nd gear) with on-the-move gear change.

Permanent four wheel drive.

Front axle is mounted rigidly, rear axle oscillates. Dropped crown and pinion reduction hubs for improved ground clearance.

BRAKES

Double circuit, oil immersed disc service and emergency brakes.

Separate mechanical parking brake.

SERVICE HYDRAULICS

Gear pump. Maximum flow: 80 l/min

Operating pressure: 200 bar

125 micron "FOR LIFE" strainer on suction line

40 micron filter on return line.

ELECTRICS

12 V system with 80 Ah battery and 55 A alternator. Full road lighting and flashing beacon.

CAPACITIES

Hydraulic oil: 110 l - Diesel fuel: 75 l

Engine oil: 6 l

Coolant: 12.5 l

TYRES

10.5 x 18" mounted on 6 stud disc rims (DIN 74361).

OPTIONS

The wide range of options includes:

Overload warning device with audio and visual warning, plus automatic hydraulic system lock out. Rear PTO.

400/60 x 15.5", 11.5/80 x 15.3", 12 x 16.5" and 15.5/55 R 18 tyres.

Front screen guard. Roof window wiper.

Pre-arrangement for mixing shovel.

ATTACHMENTS

A comprehensive range of attachments for construction, agriculture and industrial applications.

Contact your local dealer for details.

MERLO

MERLO UK LIMITED

82 Chesham Road - RINGWOOD - HAMPSHIRE - BH24 1DR - ENGLAND
 Tel (01425) 480808 - Fax (01425) 477478

MERLO SPA Industria Metallmeccanica

12020 S. DEFENDENTE DI CERVASCA (CN) - ITALY

Tel. + 39 171-85671 - Fax + 39 171-320009 - Telex 220236 Merlo I