

GIRAF **TRACK**

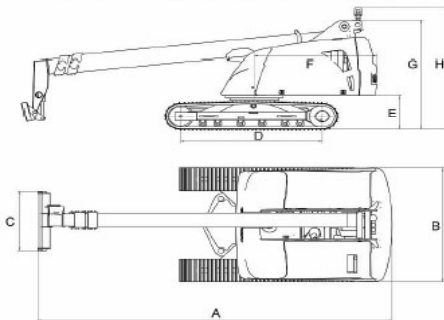
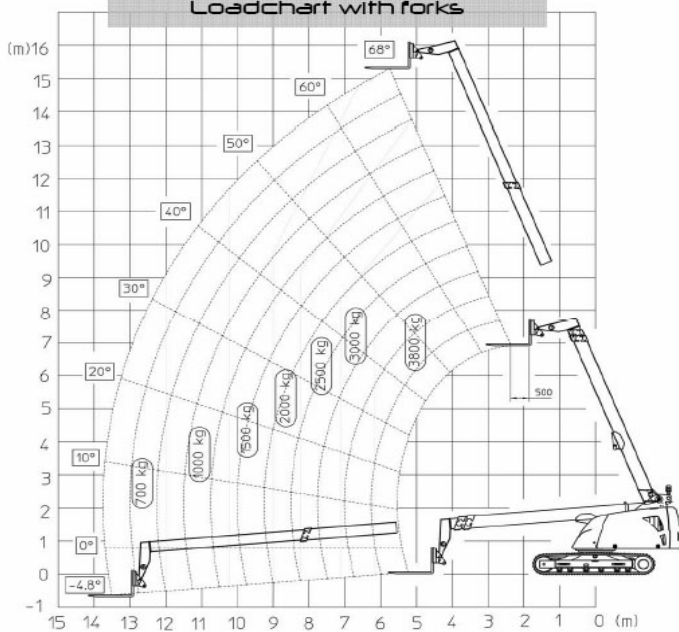


GT 580 B

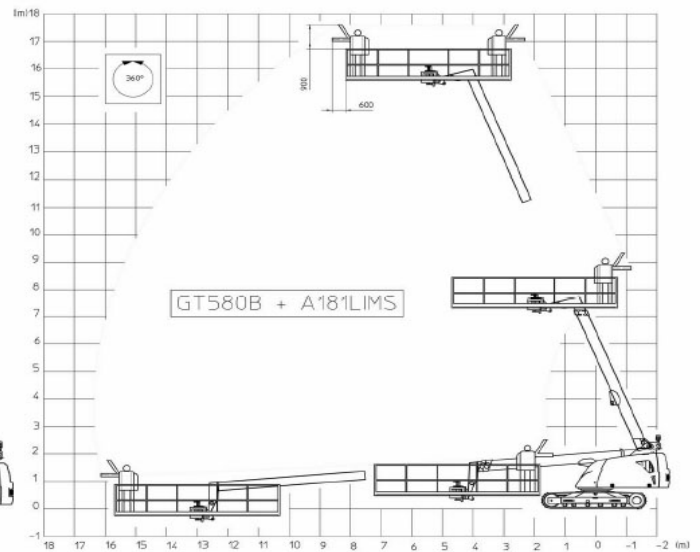
DO WHAT NO OTHER PLATFORM CAN DO

GIRAF TRACK

Loadchart with forks




Working range platform A181LIMS



Dimensions

A	7.000	mm
B	2.490	mm
C	1.300	mm
D	2.780	mm
E	770	mm
F	2.410	mm
G	2.410	mm
H	2.700	mm

Performance		GT580B
Platform max working height (A181LIMS basket)	mm	17.800
Platform max horizontal reach (A181LIMS basket)	mm	16.000
Platform max payload (A1829 basket)	kg	1.000
Jib platform max working height (200 kg payload)	mm	19.600
Max lifting height with forks	mm	15.200
Max horizontal reach with forks	mm	13.500
Max lifting capacity with forks	kg	3.800
Machine weight (without forks/platform)	kg	16.500
Engine		
Type		Diesel, 4Cycle, Water-Cooled, TIER III, Direct injection-Turbo charged
Rated Power	kW	74,5

 Testcentrum De Lille NV

Head Office: Hulstsestraat 2 – 8860 Lendeledede – Belgium

Telephone: +32 (0)56 73 80 80
 Facsimile: +32 (0)56 70 56 50
 E-mail: f.vandooren@delille.be
 URL: www.giraftrack.com

These specifications are subject to change without notice. All data is preliminary and based on calculations and subject to possible change. Illustrations and photos may or may not include optional equipment, accessories, and all standard equipment with some differences in colour and features. Giraf Track and the logo are trademarks.

LUC GELAUDE BVBA
 industriepark 12 - 8730 BEERNEM
 Tel. 050/79.02.18 - Fax. 050/79.12.09
 www.lucgelaude.be - info@lucgelaude.be