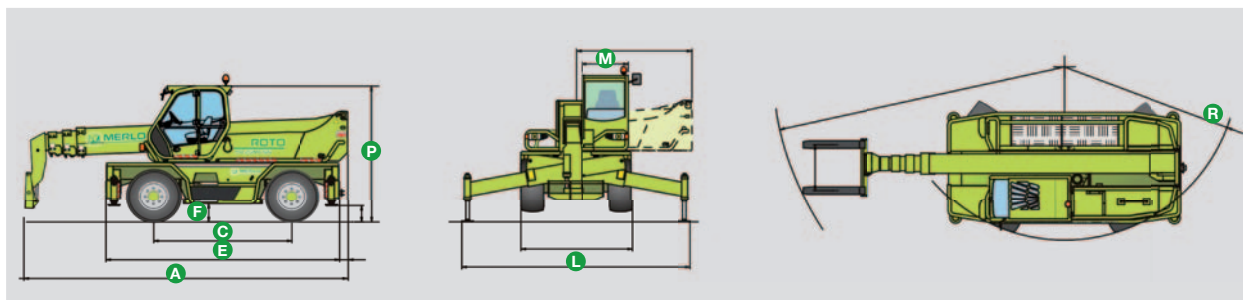


ROTO 60.24 MCSS

PROVISIONAL DATASHEET



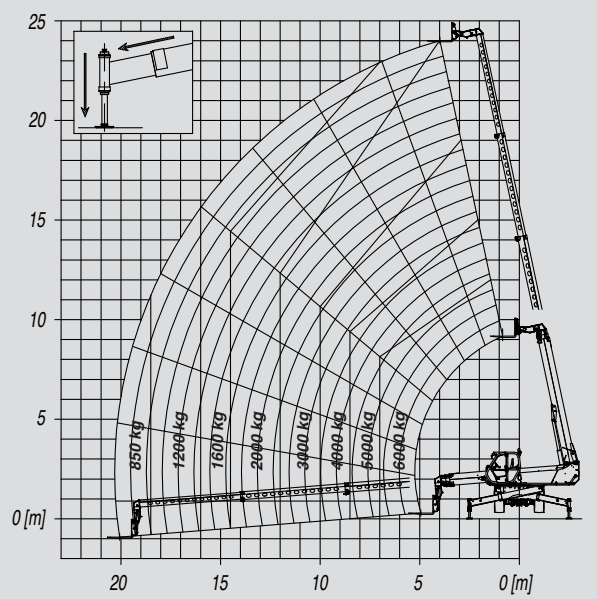
BUILDING WITH CONFIDENCE.



▼

The new Roto 60.24 MCSS is the latest evolutionary step – the first in a new family of higher capacity machines, so this new **6-ton load capacity** machine sets a new standard for on-site handling operations, and its **total lift height of over 24 metres** is exactly right.

A (mm)	7430
C (mm)	3200
E (mm)	5540
F (mm)	350
L (mm)	2490
M (mm)	995
P (mm)	3100
R (mm)	4450



▲

The **Roto 60.24 MCSS** offers all the benefits of a telescopic handler plus a lightweight lifting capability and the ability to safely place personnel into position at height. True 'Jack of all trades' on site, it allows you to work throughout 360 degrees without once moving your machine!

Total empty weight (kg)	18750
Maximum capacity (kg)	6000
Maximum lift height (m)	23.9
Maximum forward reach (m)	20.8
Lift height at full capacity (m)	12
Reach at full capacity (m)	7
Capacity at full lift height (kg)	3000
Capacity at full reach (kg)	850
Engine Tier 3 (kW/HP)	129/175
Turret rotation (deg)	Continuous
Merlin System	Standard
Tilting cab	Standard
Hydropneumatic suspensions	Standard
Load-Sensing hydraulic system	Standard



MERLO S.P.A.

Via Nazionale, 9 - 12010 S. Defendente di Cervasca - Cuneo - Italia

Tel. +39 0171 614111 - Fax +39 0171 684101

www.merlo.com - info@merlo.com